

# Direct Buck Converter with Zero Voltage Transition and PWM Control (ZVT-PWM)\*

Sergey S. Tyunin<sup>1</sup>, Vagiz A. Kabirov<sup>2</sup>, Anatoly V. Kobzev<sup>3</sup>, Valery D. Semyonov<sup>4</sup>

<sup>1</sup>Tomsk State University of Control Systems and Radioelectronics, Tomsk, Russia

<sup>2</sup>Tomsk State University of Control Systems and Radioelectronics, Tomsk, Russia

<sup>3</sup>Tomsk State University of Control Systems and Radioelectronics, Tomsk, Russia

<sup>4</sup>Tomsk State University of Control Systems and Radioelectronics, Tomsk, Russia

**Summary** – This paper presents the key calculation equations for the diagram of a direct buck converter with zero-voltage power switch transition and PWM control, and demonstrates a converter simulated in the MATLAB environment.

**Keywords** – direct converter, PWM control, ZVT-PWM switching.

## I. INTRODUCTION

THE KEY PARAMETERS OF A POWER SOURCE are: energy conversion efficiency (efficiency); number of elements in the converter; mass and dimensions of the converter. Efficiency of the converter can be enhanced by reducing or eliminating dynamic loss in semiconductor devices with the help of resonant transition. Resonant transition can be of a variable or fixed frequency type. [1] presents a diagram of fixed-frequency, PWM-controlled (ZVT-PWM) resonant transition in a buck converter, but it does not provide the equations necessary for calculation of such converter. Neither are the equations given in [2], as referenced by [1].

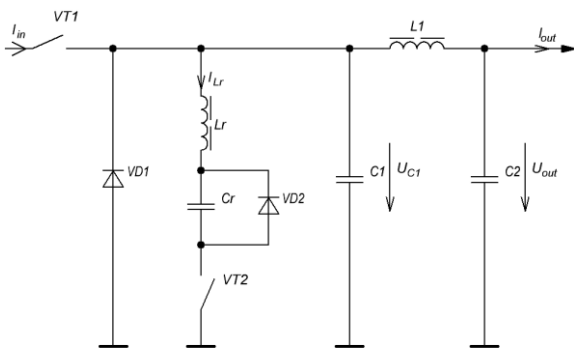


Fig.1. Functional diagram of a converter with zero-voltage transition and PWM control

Figure 1 shows the design solution that ensures a low level of dynamic loss in a direct buck converter, as discussed in [1].

The converter is a direct buck converter with an additional circuit composed of the resonant capacitor  $C_r$ , choke coil  $L_r$ , diode  $VD_2$  and transistor  $VT_2$ .

\*The study was carried out under agreement # №02.G25.31.0182 between JSC ISS and the Ministry of Education and Science of Russia dated 01.12.2015

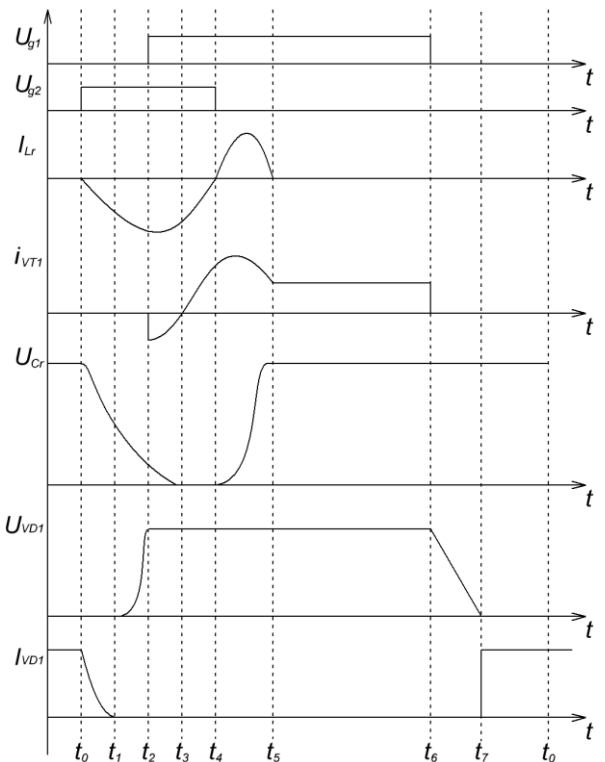


Fig.2. Current and voltage diagrams

The distinctive feature of this design solution is that it allows for adjustment of the relative pulse length of the main transistor  $VT_1$  with zero-voltage transition. [3] also discusses the ZVT-PWM converter, although the secondary transistor of the converter uses hard transition. That serves as an advantage of this design solution compared to the solution described in [3].

Figure 2 shows currents and voltages of the key elements in the diagram shown in Figure 1. One cycle is divided into eight time intervals where the diagram remains unchanged. For ease of explanation, short time intervals have been stretched, and long ones have been compressed.

This paper derives expressions for calculation of time interval values for the converter, presents equations for calculation of the resonant circuit, and demonstrates a converter simulation in the MATLAB/Simulink environment.

## II. PROBLEM STATEMENT

The objective of this paper is to arrive at analytic expressions allowing to calculate the parameters of a ZVT-PWM buck converter and to check such expressions by simulating the converter in the MATLAB environment.

## III. THEORY

In development of analytic expressions, the following assumptions are conventional: pulsations of current  $I_{L1}$  and output voltage  $U_{C2}$  are at level zero; there are no losses in the key elements and diodes; the transition time for transistors and diodes is zero.

### A. Time interval $t_0 - t_1$

In this interval, transistor  $VT_2$  switches on, the current of choke coil  $i_{L1}$  flows through the circuit “ $I_{L1}-C_2-VD_1$ ”, the current of resonant choke coil  $L_r$  builds up along the circuit: “ $C_r - L_r - VD_1 - VT_2$ ”, as shown in Figure 3.

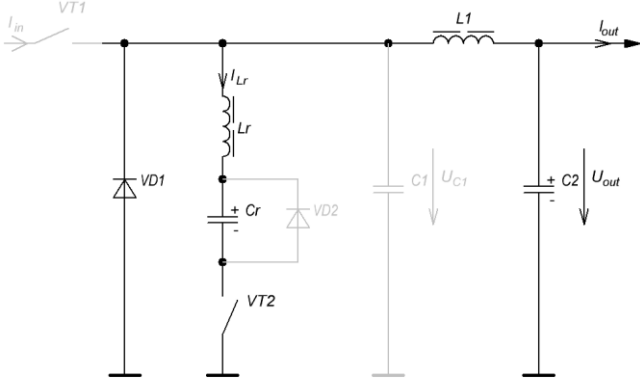


Fig.3. Current flow circuit in interval  $t_0 - t_1$

Initial conditions:  $VD_1$ -open;  $VD_2$ -closed;  $VT_1$ -closed;  $VT_2$ -open.

Initial current and voltage

$$i_{Lr}(t_0) = 0,$$

$$u_{Cr}(t_0) = U_{CrT0},$$

$$u_{C1}(t_0) = 0.$$

Variables determining the status of the converter are expressed with the following equations:

$$i_{Lr}(t_{01}) = -\frac{U_{CrT0}}{Z_0} \sin(\omega_0 t) \quad (1)$$

$$u_{Cr}(t_{01}) = U_{CrT0} \cos(\omega_0 t) \quad (2)$$

$$u_{C1}(t_{01}) = 0 \quad (3)$$

where:  $\omega_0 = \frac{1}{\sqrt{L_r \cdot C_r}}$  is the angular frequency of the resonant circuit;  $Z_0 = \sqrt{\frac{L_r}{C_r}}$  is the characteristic impedance of the resonant circuit.

At moment  $t_1$ , current  $i_{Lr}$  reaches the rate of current  $I_{L1}$ , the current of diode  $VD_1$  becomes zero and it closes. The duration of time interval  $t_0 - t_1$  is calculated by substituting  $i_{Lr}(t_0) = I_{L1}$  in equation (1).

$$\Delta t_{01} = \frac{1}{\omega_0} \arcsin\left(-\frac{Z_0 I_{L1}}{U_{CrT0}}\right) = \frac{\alpha}{\omega_0} \quad (4)$$

### B. Time interval $t_1 - t_2$

In this interval, capacitor  $C_r$  continues to discharge and capacitor  $C_1$  charges through the circuit: “ $C_r - L_r - C_1 - VT_2$ ”, the current of choke coil  $L_1$  closes through capacitor  $C_1$ . The current flow circuits are shown in Figure 4.

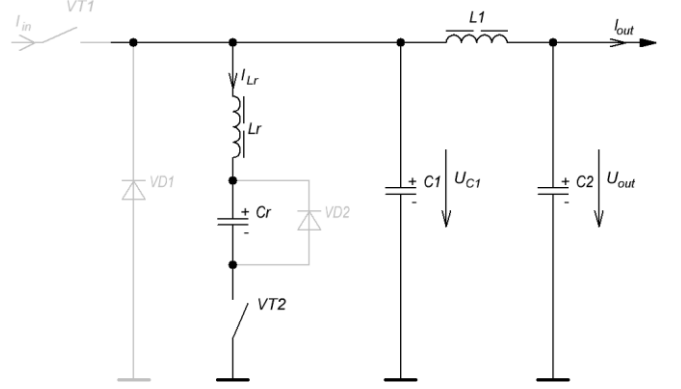


Fig.4. Current flow circuit in interval  $t_1 - t_2$

Initial conditions:  $VD_1$ -closed;  $VD_2$ -closed;  $VT_1$ -closed;  $VT_2$ -open.

$$i_{Lr}(t_1) = -I_{L1},$$

$$u_{Cr}(t_1) = U_{CrT0} \cos(\alpha) = U_{CrT1} \quad (5)$$

$$u_{C1}(t_1) = 0.$$

Variables determining the status of the converter are expressed with the following equations:

Current of the resonant choke coil

$$i_{Lr}(t_{12}) = -I_{L1} \cos(\omega_S t) - \frac{U_{CrT1}}{Z_S} \sin(\omega_S t) - I_{L1} \frac{C_S}{C_1} (1 - \cos(\omega_S t)) \quad (6)$$

where:  $C_S = \frac{C_1 C_r}{C_1 + C_r}$  is the equivalent capacitance of series-connected capacitors  $C_1$  and  $C_r$ ;

$Z_S = \sqrt{\frac{L_r}{C_S}}$  is the characteristic impedance of the resonant circuit created by series connection of capacitor  $C_1$ , capacitor  $C_r$  and choke coil  $L_r$ .

$\omega_S = \frac{1}{\sqrt{L_r C_S}}$  is the angular frequency of the resonant circuit created by series connection of capacitor  $C_1$ , capacitor  $C_r$  and choke coil  $L_r$ .

If  $C_r \ll C_1$ , then expression (5) can be simplified as follows

$$i_{Lr}(t_{12}) = -I_{L1} - \frac{U_{CrT1}}{Z_S} \sin(\omega_S t) \quad (7)$$

Under this assumption, voltage of capacitors  $C_r$  and  $C_1$  is expressed with the following equations

$$u_{Cr}(t_{12}) = -\frac{I_{L1}}{C_r}t + \frac{C_1}{C_r}U_{CrT1}(\cos(\omega_s t) - 1) + U_{CrT1} \quad (8)$$

$$u_{C1}(t_{12}) = U_{CrT1}\cos(\omega_s t - 1) \quad (9)$$

At moment  $t_2$ , the voltage of capacitor  $C_1$  becomes equal to the source voltage. The voltage of transistor VT1 becomes zero and it can be switched on without loss. The duration of interval  $t_1 - t_2$  is calculated by substituting  $u_{C1}(t_{12})$  equal to  $U_{in}$  in equation (8)

$$\Delta t_{12} = \frac{1}{\omega_s} \arccos\left(\frac{U_{CrT1} - U_{in}}{U_{CrT1}}\right) = \frac{\beta}{\omega_s} \quad (10)$$

### C. Time interval $t_2 - t_3$

In this interval, resonant capacitor  $C_r$  continues to discharge through the circuit: “ $C_r - L_r - C_1 - VT_2$ ”. The current of choke coil  $L_1$  flows through the circuit “ $L_1 - C_2 - VT_1$ ” as shown in Figure 5.

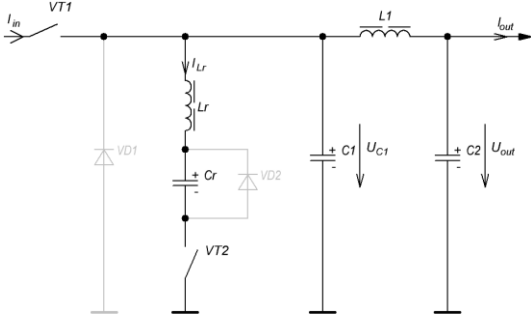


Fig.5. Current flow circuit in interval  $t_2 - t_3$

#### Initial conditions.

Status of semiconductor elements: VT<sub>1</sub> – open; VT<sub>2</sub> – open; VD<sub>2</sub> – closed; VD<sub>1</sub> – closed.

Initial current and voltage:

$$\begin{aligned} i_{Lr}(t_2) &= I_{LrT2}, \\ u_{Cr}(t_2) &= U_{CrT2}, \\ u_{C1}(t_2) &= U_{in}. \end{aligned}$$

Variables determining the status of the converter are expressed with the following equations:

$$i_{Lr}(t_{23}) = I_{LrT2}\cos(\omega_0 t) + \frac{U_{in} - U_{CrT2}}{Z_0}\sin(\omega_0 t) \quad (11)$$

$$u_{Cr}(t_{23}) = I_{LrT2}Z_0\sin(\omega_0 t) + (U_{in} - U_{CrT2}) \cdot (1 - \cos(\omega_0 t)) + U_{CrT2} \quad (12)$$

$$u_{C1}(t_{23}) = U_{in} \quad (13)$$

At moment  $t_3$ , the voltage of capacitor  $C_r$  becomes zero. In order to calculate time interval  $\Delta t_{23}$ , we shall reduce the expression  $u_{Cr}(t_2) = 0$  to a homogeneous equation. The original non-homogeneous equation appears as:

$$a\sin(x) + b\cos(x) = c \quad (14)$$

Homogeneous equation:

$$\begin{aligned} (c + b) \cdot \sin^2\left(\frac{x}{2}\right) - 2a \cdot \sin\left(\frac{x}{2}\right)\cos\left(\frac{x}{2}\right) + \\ +(c - b) \cdot \cos^2\left(\frac{x}{2}\right) = 0 \end{aligned} \quad (15)$$

Then we shall substitute the variables, solve quadratic equation (14) for  $y = tg\left(\frac{x}{2}\right)$ . The time interval is calculated using equation:

$$\Delta t_{23} = \frac{2}{\omega_s} \arctg(y_1) \quad (16)$$

where  $y_1$  is the smallest equation root (14).

### D. Time interval $t_3 - t_4$

In this interval, choke coil  $L_r$  recharges through the circuit “ $L_r - VT_2 - VT_1$ ”. The choke coil  $L_1$  voltage flows through the circuit “ $VT_1 - L_1 - C_2$ ” as shown in Figure 6.

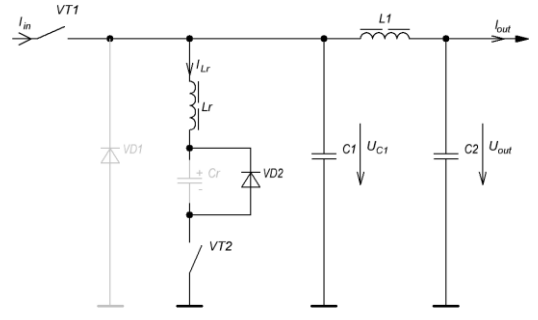


Fig.6. Current flow circuit in interval  $t_3 - t_4$

#### Initial conditions.

Status of semiconductor elements: VT<sub>1</sub> – open; VT<sub>2</sub> – open; VD<sub>2</sub> – open; VD<sub>1</sub> – closed.

Initial current and voltage:

$$\begin{aligned} i_{Lr}(t_3) &= I_{LrT3}, \\ u_{Cr}(t_3) &= 0, \\ u_{C1}(t_3) &= U_{in}. \end{aligned}$$

Variables determining the status of the converter are expressed with the following equations:

$$i_{Lr}(t_{34}) = -I_{LrT3} + \frac{U_{out}}{L_r} \cdot t \quad (17)$$

$$u_{Cr}(t_{34}) = 0 \quad (18)$$

$$u_{C1}(t_{34}) = U_{in} \quad (19)$$

At moment  $t_4$ , the current of choke coil  $L_r$  becomes zero and transistor VT2 switches off at current zero. The duration of time interval  $t_3 - t_4$  is calculated by substituting  $i_{Lr}(t_{34}) = 0$  in  $t = \Delta t_{34}$  in equation (16)

$$\Delta t_{34} = -\frac{I_{LrT3} \cdot U_{out}}{L_r} \quad (20)$$

### E. Time interval $t_4 - t_5$

In time interval  $t_4 - t_5$ , resonant capacitance  $C_r$  charges through the circuit: “VT<sub>1</sub> – L<sub>r</sub> – C<sub>r</sub> – reverse diode VT<sub>2</sub>”. The current of choke coil L<sub>1</sub> flows through the circuit “VT<sub>1</sub> – L<sub>1</sub> – C<sub>2</sub>”. The current flow circuits are shown in Figure 7.

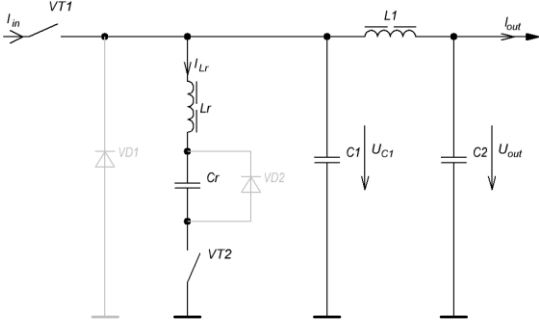


Fig.7. Current flow circuit in interval  $t_4 - t_5$

#### Initial conditions.

Status of semiconductor elements: VT<sub>1</sub> – open; VT<sub>2</sub> – open; VD<sub>2</sub> – closed; VD<sub>1</sub> – closed.

Initial current and voltage:

$$i_{L_r}(t_4) = 0$$

$$u_{C_r}(t_4) = 0$$

$$u_{C_1}(t_4) = U_{in}$$

Variables determining the status of the converter are expressed with the following equations:

$$i_{L_r}(t_{45}) = \frac{U_{out}}{Z_0} \sin(\omega_0 t) \quad (21)$$

$$u_{C_r}(t_{45}) = U_{out} (1 - \cos(\omega_0 t)) \quad (22)$$

$$u_{C_1}(t_{45}) = U_{in} \quad (23)$$

At moment  $t_5$ , the current of choke coil L<sub>r</sub> becomes zero and the reverse diode of transistor VT<sub>2</sub> switches off. At the same time, capacitor C<sub>r</sub> charges to double the input voltage  $U_{in}$  and is ready to further switching. The duration of time interval  $t_4 - t_5$  is calculated by substituting  $i_{L_r}(t_{45}) = 0$  and  $t = t_{45}$  in equation (20).

$$\Delta t_{45} = \frac{\pi}{\omega_0} \quad (24)$$

#### F. Time interval $t_5 - t_6$

In this interval, the resonant process in the circuit “L<sub>r</sub> – VT<sub>2</sub> – C<sub>r</sub>” is finished and energy accumulates in the choke coil of the direct converter. The current of choke coil L<sub>1</sub> flows through the circuit “VT<sub>1</sub> – L<sub>1</sub> – C<sub>2</sub>”, as shown in Figure 8.

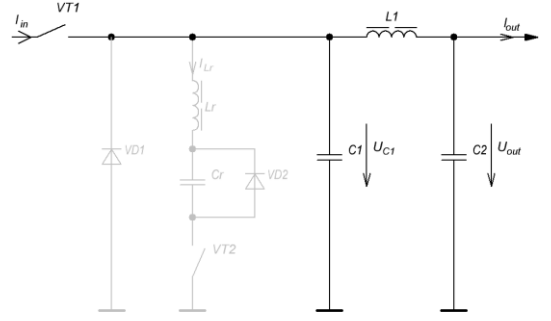


Fig.8. Current flow circuit in interval  $t_5 - t_6$

#### Initial conditions.

Status of semiconductor elements: VT<sub>1</sub> – open; VT<sub>2</sub> – closed; VD<sub>2</sub> – closed; VD<sub>1</sub> – closed.

Initial current and voltage:

$$i_{L_r}(t_5) = 0$$

$$u_{C_r}(t_5) = 2U_{out}$$

$$u_{C_1}(t_5) = U_{in}$$

Pulse time is measured with the pulse-width modulator. At moment  $t = t_6$ , transistor VT<sub>1</sub> switches off at near-zero voltage, because the charge level of capacitor C<sub>1</sub> is at the level of input voltage.

#### G. Time interval $t_6 - t_7$

In this interval, the voltage of diode VD<sub>1</sub> (capacitor C<sub>1</sub>) drops to zero due to current IL1 discharge from capacitor C<sub>1</sub> through the circuit “L<sub>1</sub> – C<sub>2</sub> – C<sub>1</sub>”. The current of choke coil L<sub>1</sub> flows through the circuit “VD<sub>1</sub> – L<sub>1</sub> – C<sub>2</sub>”. The current flow circuits are shown in Figure 9.

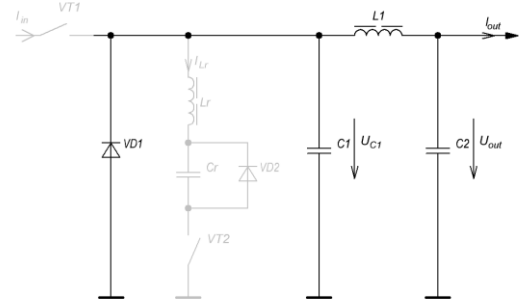


Fig.9. Current flow circuit in interval  $t_6 - t_7$

#### Initial conditions.

Status of semiconductor elements: VT<sub>1</sub> – closed; VT<sub>2</sub> – closed; VD<sub>2</sub> – closed; VD<sub>1</sub> – open.

Initial current and voltage:

$$i_{L_r}(t_6) = 0$$

$$u_{C_r}(t_6) = 2U_{out}$$

$$u_{C_1}(t_6) = U_{in}$$

Variables determining the status of the converter are expressed with the following equations:

$$i_{L_r}(t_{67}) = 0 \quad (25)$$

$$u_{Cr}(t_{67}) = 2U_{out} \quad (26)$$

$$u_{C1}(t_{67}) = U_{in} - \frac{I_{L1}}{C_1} \cdot t \quad (27)$$

At moment  $t_6$ , the voltage of capacitor C1 becomes zero and diode VD1 opens. The duration of time interval  $t_6 - t_7$  is calculated with equation (26).

$$\Delta t_{67} = \frac{U_{in} \cdot C_1}{I_{L1}} \quad (28)$$

#### H. Time interval $t_7 - t_8$

Interval  $t_7 - t_8$  is characterized by the pause time. The current flow circuit is as shown in Figure 10.

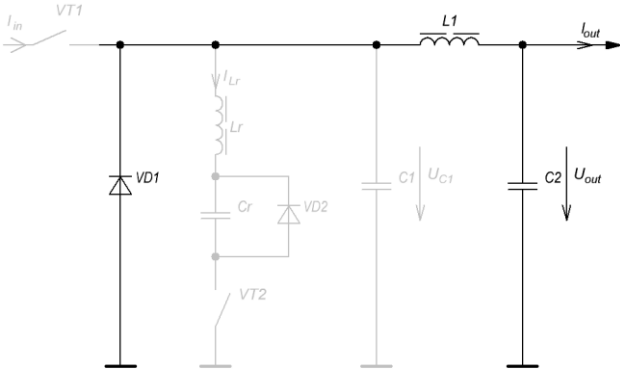


Fig.10. Current flow circuit in interval  $t_7 - t_8$

#### Initial conditions.

Status of semiconductor elements: VT<sub>1</sub> – closed; VT<sub>2</sub> – closed; VD<sub>1</sub> – open; VD<sub>2</sub> – closed.

Initial current and voltage:

$$\begin{aligned} i_{Lr}(t_7) &= 0 \\ u_{Cr}(t_7) &= 2U_{out} = U_{CrT0}, \\ u_{C1}(t_7) &= 0. \end{aligned} \quad (29)$$

Pulse time is measured with the pulse-width modulation. At moment  $t = t_8 = t_0$ , transistor VT2 switches off at zero current. Then the processes repeat themselves. Equation (28) shows that the voltage of resonant capacitor Cr, at moment  $t_0$ , equals  $2U_{out}$ .

#### I. Plotting time graphs of switching processes.

Diagrams of the current of resonant choke coil  $i_{Lr}(t)$  and the voltage of resonant capacitance  $u_{Cr}(t)$  are plotted using equations (29) and (30):

$$i_{Lr}(t) = \begin{cases} i_{Lr}(t_{01}), t_0 \leq t < t_1 \\ i_{Lr}(t_{12}), t_1 \leq t < t_2 \\ i_{Lr}(t_{23}), t_2 \leq t < t_3 \\ i_{Lr}(t_{34}), t_3 \leq t < t_4 \\ i_{Lr}(t_{45}), t_4 \leq t < t_5 \\ 0, t_5 \leq t < t_8 \end{cases} \quad (30)$$

$$u_{Cr}(t) = \begin{cases} u_{Cr}(t_{01}), t_0 \leq t < t_1 \\ u_{Cr}(t_{12}), t_1 \leq t < t_2 \\ u_{Cr}(t_{23}), t_2 \leq t < t_3 \\ 0, t_3 \leq t < t_4 \\ u_{Cr}(t_{45}), t_4 \leq t < t_5 \\ 2U_{out}, t_5 \leq t < t_8 \end{cases} \quad (31)$$

Using systems (29) and (30), we derive equations for voltage of the capacitor and current of transistor VT1.

$$u_{C1}(t) = \begin{cases} 0, t_0 \leq t < t_1 \\ u_{C1}(t_{12}), t_1 \leq t < t_2 \\ U_{in}, t_2 \leq t < t_7 \\ 0, t_7 \leq t < t_8 \end{cases} \quad (32)$$

$$i_{VT1}(t) = \begin{cases} 0, t_0 \leq t < t_1 \\ I_{L1} + i_{Lr}(t), t_1 \leq t < t_6 \\ 0, t_6 \leq t < t_8 \end{cases} \quad (33)$$

Figure 11 shows diagram of switching processes plotted using the equations. The solid line shows the current of transistor VT1, and the dotted line shows the voltage of capacitance C<sub>1</sub>.

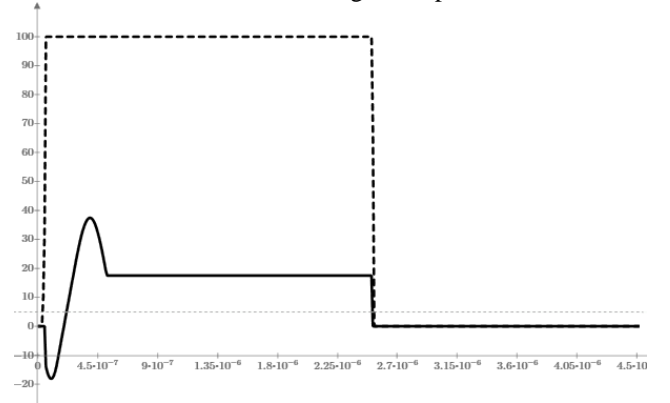


Fig.11. Diagrams of switching processes

Figure 12 shows diagrams of the voltage of resonant capacitor Cr (solid line) and the voltage of capacitor C<sub>1</sub> (dotted line), plotted using the same approach.

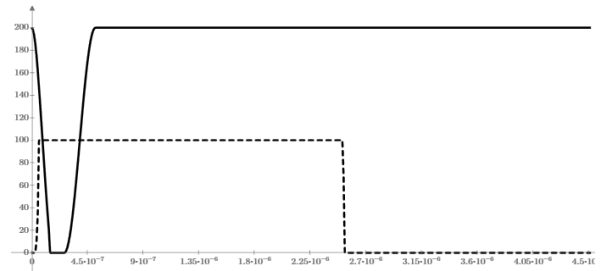


Fig.12. Diagrams of converter operation

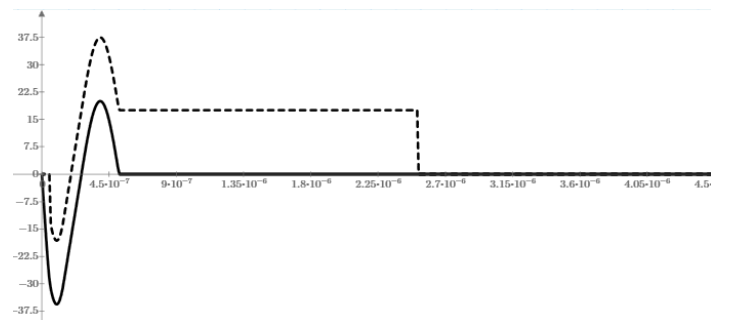


Fig.13. Diagrams of converter operation

Figure 13 shows diagrams of the current of resonant inductor  $L_r$  (solid line) and the drain current of transistor  $VT_1$  (dotted line).

#### J. Defining the ZVT-PWM computation algorithm

The operating sequence of the **converter** described above is true of, in time interval  $t_1$ - $t_2$ , the voltage of capacitance  $C_1$  reaches the value of zero before the voltage of capacitance  $C_r$ . And the higher is the ratio of capacitance  $C_r$  value to capacitance  $C_1$  value, the more exact are the expressions (7,8,9). Let us assume that the following expression equals zero.

$$C_r \geq 10 \cdot C_1 \quad (34)$$

Assuming that the time of the capacitance  $C_1$  discharge equals a quarter of its natural cycle with angular frequency  $\omega_s$ , using expression (9) we can calculate that the voltage of capacitance  $C_r$ , at moment  $t_1$ , should equal  $U_{in}$ . Substituting this voltage value equaling  $U_{in}$  in expression (5), we obtain an equation for calculation of  $Z_0$ .

$$Z_0 \leq \sqrt{3} \cdot \frac{U_{in}}{I_{L1}} \quad (35)$$

Inductor of the resonant circuit is calculated from equation:

$$L_r = Z_0^2 \cdot C_1 \quad (36)$$

As a first approximation, the value of inductor  $L_1$  can be defined for the regular buck converter with hard switching.

## IV. EXPERIMENTAL RESULTS

In order to check the validity of the above equations, the authors have simulated the ZVT-PWM converter in the MATLAB/Simulink environment with the values calculated using equations (34)..(36). Figure 14 shows the simulation of the ZVT-PWM converter.

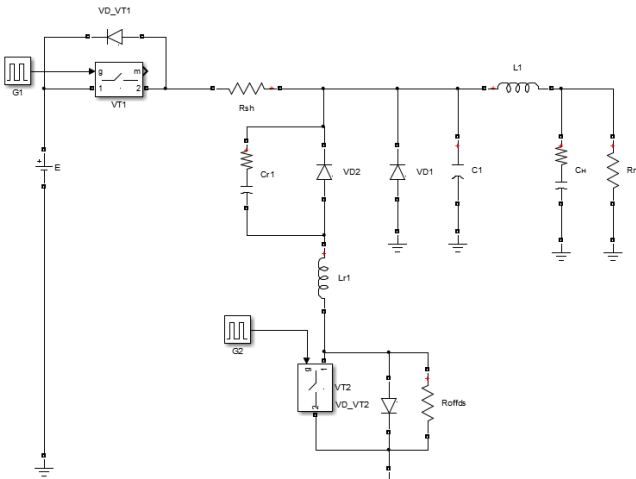


Fig.14. Converter simulation in the MATLAB/Simulink environment

Figure 15 shows the simulation results. The dotted line shows the source-drain voltage of transistor  $VT_1$ , and the solid line shows the drain current of the transistor.

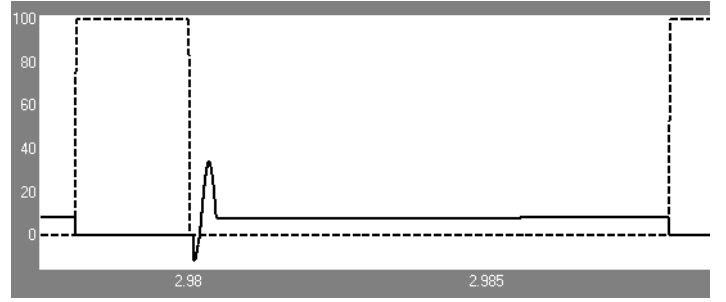


Fig.15. Diagrams of switching processes in the converter transistor

Figure 16 shows diagrams of the current of the resonant inductor (solid line) and the drain current of the transistor (dotted line) in Simulink.

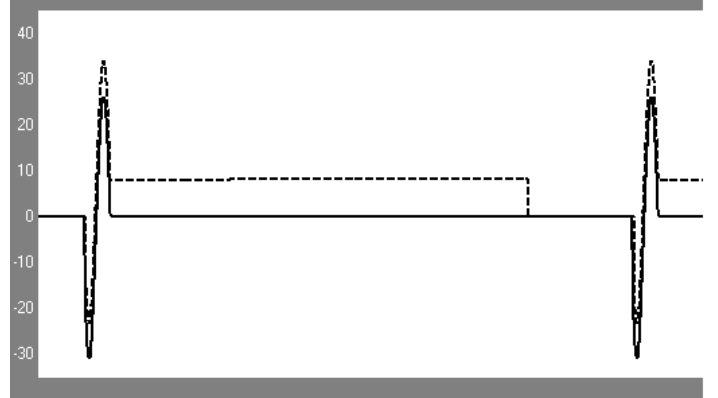


Fig.16. Diagrams of converter operation

Figure 17 shows diagrams of the voltage of the resonant capacitance (solid line) and the source-drain voltage of the converter transistor in Simulink.

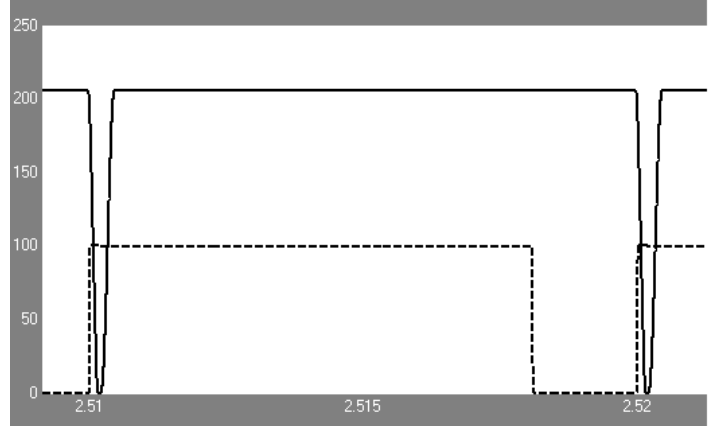


Fig.17. Diagrams of switching processes in the converter transistor

## V. DISCUSSION OF RESULTS

Analysis shows that diagrams representing the above equation systems and diagrams resulting from simulation of a ZVT-PWM converter in the Simuink environment are identical, which supports the validity of the results obtained using both of the methods.

## VI. SUMMARY AND CONCLUSION

Based on the results presented in this paper, the authors conclude that the described method for reduction of dynamic loss in a converter is valid and implementable.

## REFERENCES

[1] Muhamah H. Rashid. Power Electronics Handbook/ Editor-In-Chief – USA:525 B street, Suite 1900, San Diego, California.

[2] F.C. Lee and D. Borojevic, “Soft-switching PWM converters and inverters”, Tutorial notes, PESC’94

[3] Goryashin N. N., Khoroshko A. Yu. O Povyshenii Energeticheskoi Effektivnosti Impulsnogo Preobrazovatelya Napryazheniya s Rezonansnym Pereklyucheniem. Vestnik Sibirskogo Gosudarstvennogo Aerokosmicheskogo Universiteta Imeni M. F. Reshetneva. 2011, Issue 4(37), pp. 20-24.



Tyunin Sergey Sergeevich, born in 1989 in Tomsk, Russia. In 2013 he obtained a Specialist degree as an Industrial Electronics Engineer from Tomsk State University of Control Systems and Radioelectronics (TUSUR University), in 2015 he received a Master of Engineering and Technology degree. In 2015 he began his studies as a PhD student at TUSUR University. Starting in 2015, he has been working at the Laboratory of Pulse-Width Modulation Power Systems. The laboratory develops and tests various types of power sources for civilian use. Sergey Tyunin is an author of 8 regional and inter-university publications and the holder of a utility model patent.



Kabirov Vagiz Alexandrovich, born in 1983 in Tomsk, Russia. In 2005 he graduated from Tomsk State University of Control Systems and Radioelectronics (TUSUR University), majoring in Industrial Electronics. Starting in 2015, he has been a faculty member of the Department of Industrial Electronics of TUSUR University and the head of the Laboratory of Project-Based Group Learning. Vagiz Kabirov is a co-author of 17 utility model patents and over 40 publications.



Kobzev Anatoly Vasilyevich, born in 1944 in Khabarovsk, Russia. In 1967 he graduated magna cum laude from Tomsk Polytechnic Institute, majoring in Electric Equipment of Aircraft. In 1982 he received the Doctor’s degree for his thesis on Theory and Application and Multizone Pulse-Width Modulation in Fast Power Control Systems”. In 1984 he has become a Professor. In 1980-2014 he was the Head of the Department of Industrial Electronics of Tomsk State University of Control Systems and Radioelectronics (TUSUR University). In 1999-2009 he was the President of TUSUR University. Starting in 2015, he has been a Professor at TUSUR University. Anatoly Kobzev is the author of 6 monograph, numerous publications and over 100 inventions.



Semyonov Valery Dmitrievich, born in 1949 in Novosibirsk region, Russia. In 1972 he graduated from Tomsk Polytechnic Institute, majoring in Electric Equipment of Aircraft. In 1972-1992 he worked in Research Institute of Automation and Electrical Engineering of Tomsk State University of Control Systems and Radioelectronics (TUSUR University) as an engineer, junior researcher, senior researcher, head of laboratory, head of division. In 1982 he received the Candidate’s degree for his thesis on Alternating Voltage Regulators with High-Frequency Boost Link. In 1992 he became an Associate Professor, and in 2010 – a Professor at the Department of Industrial Engineering of TUSUR University. He has given lectures on Foundations of Converter Engineering, Power Electronics. Today he is a lecturer on

Semiconductor Switches in Power Systems and Pulse-Width Modulation Systems for Master students majoring in Electronics and Nanoelectronics. Valery Semenov is a co-author of three monographs, four course books, over 50 author certificates and patents, and over 150 publications. He is the scientific supervisor of four PhD students for their theses in Power Electronics. Four of his former PhD students have successfully obtained Candidate degrees. Today he is the Head of the Laboratory of Pulse-Width Modulation Power Systems.